

- OPERABLE PARTITIONS

- PORTABLE PANELS

- ACCORDION DOORS

REVELATIONS

- WOVEN FABRICS FOR

VERTICAL SURFACES

AND PANEL SYSTEMS

COMMITMENT TO THE ENVIRONMENT

ALL REVELATIONS FABRICS ARE VOC, ODS AND PVC FREE.
THEY CONTAIN NO HEAVY METALS OR FORMALDEHYDE.



HUF COR Inc.

P.O. Box 591, 2101 Kennedy Rd.

Janesville, WI 53547

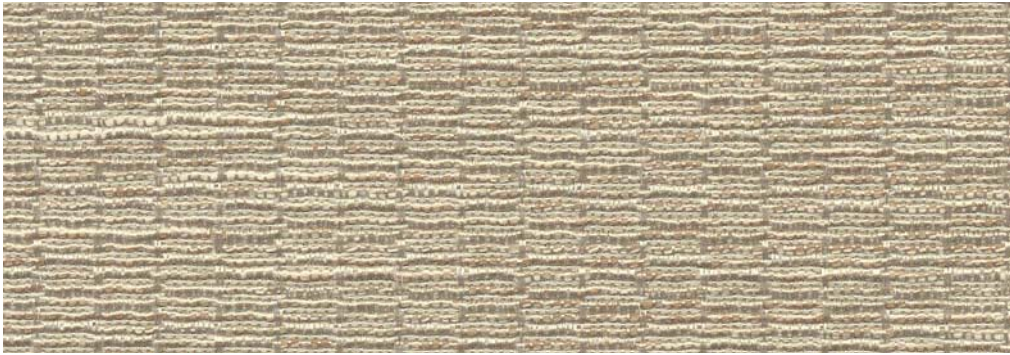
Tel: 608-756-1241 or 800-356-6968

FAX: 608-756-1246

Website: www.hufcor.com

Email: info@hufcor.com

FACADE
102-10
Bluefrost



MATRIX
100-11
Caraway



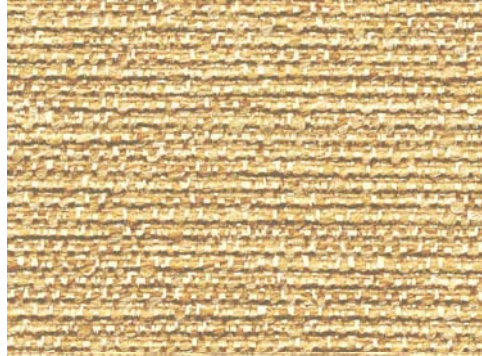
CHENILLE
40-13
Spring



SILK ROAD
22-07
Cooper



AMBIANCE
58-11
Wheat



CONFETTI
101-07
Sesame



DELIGHT
48-03
Coin



HUF COR Inc.
P.O. Box 591, 2101 Kennedy Road
Janesville, WI 53547
Tel: 608-756-1241 or 800-356-6968
FAX: 608-756-1246
Website: www.hufcor.com
Email: info@hufcor.com

REVELATIONS

REVELATIONS

COMBINES THE BEAUTY OF FINE NATURAL TEXTILES SUCH AS LINEN AND SILK WITH THE EXTRAORDINARY DURABILITY OF POLYOLEFIN YARNS.

HIGH PERFORMANCE CONSTRUCTION AND UNIQUE FINISHING PROCESS PROVIDE EXTREME PROTECTION FROM ABRASION, MILDEW, SOILING AND FIRE.


Teflon[®]
fabric protector
Only by DuPont

©DuPont registered trademark for textile finish.

MATRIX



100-12
Moonstone

100-03
Antique Bone

100-02
Pearl

100-04
Buttercream

100-09
Honey



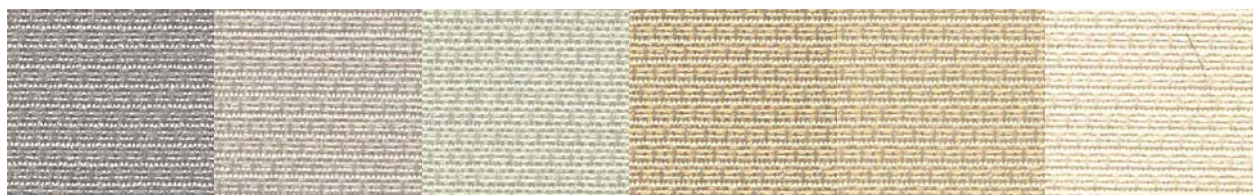
100-16
Platinum

100-08
Quarry

100-10
Brownstone

100-11
Caraway

100-05
Wild Wheat



100-14
Glacier

100-13
Quicksilver

100-15
Mystique

100-07
Hopsack

100-06
Water Chestnut

100-01
Cosmos

FACADE



102-01
Flax

102-03
Bisque

102-05
Dusk

102-06
Driftwood

102-10
Bluefrost



102-02
Glow

102-04
Truffle

102-09
Caraway

102-07
Amber

102-08
Toffee

DELIGHT



48-10
Steel

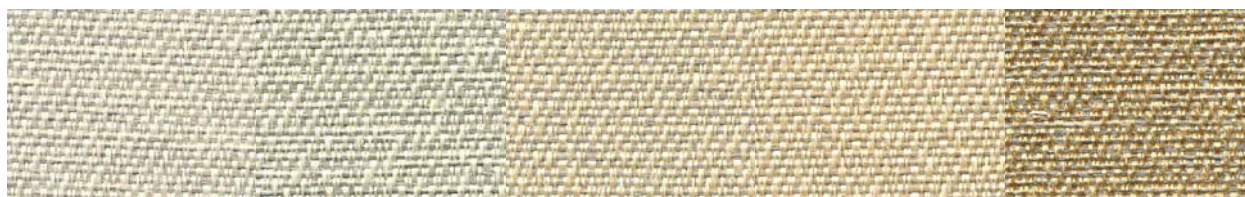
48-05
Fog

48-07
Nutmeg

48-04
Ecru

48-06
Leaf

48-08
Oceanic



48-02
Birch

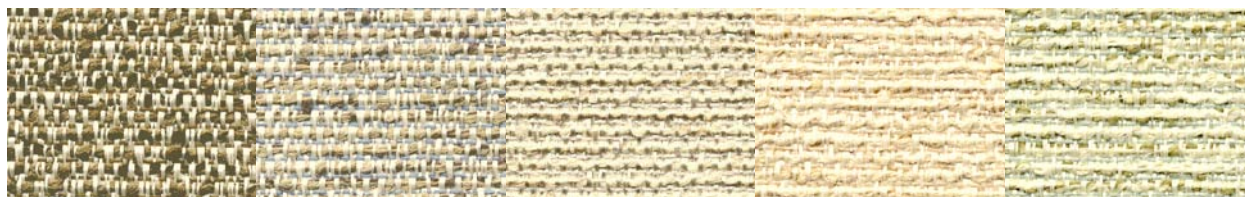
48-11
Tarragon

48-09
Sepia

48-01
Antique

48-03
Coin

AMBIANCE



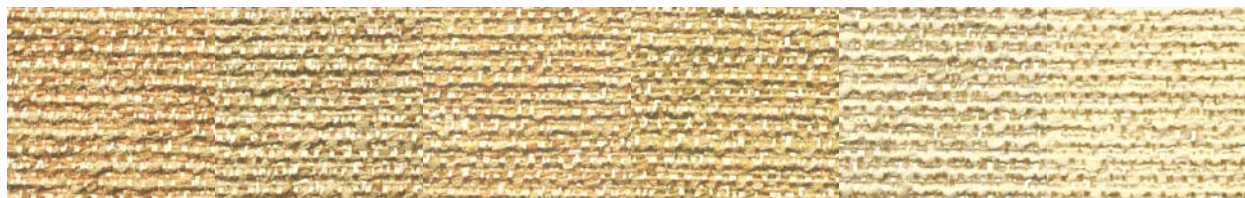
58-07
Patina

58-02
Atlantis

58-01
Aluminum

58-06
Moonstone

58-08
Sage



58-05
Cinnamon

58-04
Chestnut

58-11
Wheat

58-03
Bronze

58-09
Spa

58-10
Vanilla

CONFETTI



101-08 Blush 101-04 Sand 101-01 Shell 101-02 Spa 101-03 Shimmer



101-05 Cork 101-07 Sesame 101-06 Desert 101-09 Cooper 101-10 Canyon

CHENILLE

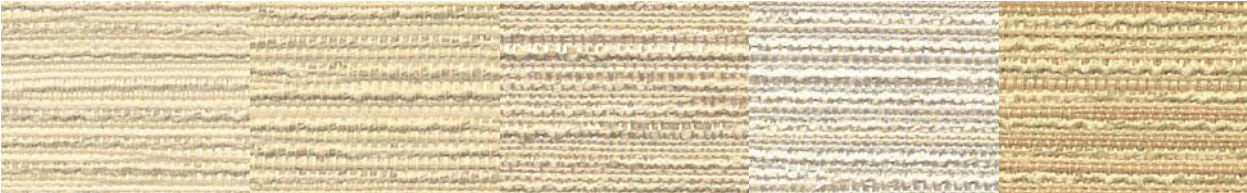


40-09 Bone 40-04 Fleece 40-05 Goldwash 40-06 Limestone 40-03 Elephant 40-02 Chamomile



40-10 Moonlight 40-13 Spring 40-12 Bayside 40-11 Driftwood 40-01 Autumn 40-07 Mink

SILK ROAD



22-01 Tusk 22-02 Rawsilk 22-04 Platinum 22-08 Mist 22-05 Dune



22-09 Storm 22-10 Lake 22-07 Cooper 22-06 Sandcastle 22-03 Raffia

AMBIANCE • CHENILLE • CONFETTI • DELIGHT • FACADE MATRIX • SILK ROAD

PHYSICAL SPECIFICATIONS

CONTENTS:	WOVEN OF OLEFIN/POLYESTER YARNS
WIDTH:	54" PLUS (SELVAGE)
BACKING:	ACRYLIC/LATEX WITH MILDEW INHIBITOR
ROLL SIZE:	50 YARDS

FINISH

TREATED WITH TEFLON® FABRIC PROTECTION SYSTEM BY DUPONT. TEFLON'S SOIL AND STAIN RESISTANCE ADDS YEARS TO THE LIFE OF A FABRIC. IT DRAMATICALLY CUTS ON-SITE MAINTENANCE AND REPLACEMENT COSTS, MAKING EVERY INSTALLATION A BETTER INVESTMENT FOR YOUR CUSTOMERS.

FLAMMABILITY

TUNNEL TEST::	CLASS A 20-50-0 (GYPSUM)
CORNER BURN:	PASSES
VERTICAL BURN:	PASSES
TOXICITY:	MEA #279-90M
CIGARETTE IGNITION:	UFAC CLASS 1

PERFORMANCE

COLORFASTNESS TO LIGHT:	CLASS 5 (OVER 200 HOURS)
COLORFASTNESS TO CROCKING:	CLASS 5 (DRY/WET PROCEDURE)
MOISTURE REGAIN:	.05% (EXCELLENT)
TEAR STRENGTH:	WARP-38.7 LBS., FILL-19.8 LBS.
TENSILE STRENGTH:	WARP-190.3 LBS., FILL-210.0 LBS.
ABRASION RESISTANCE:	UP TO 100,000 MINIMUM CYCLES (COTTON DUCK)

COMMITMENT TO THE ENVIRONMENT

ALL REVELATIONS FABRICS ARE VOC, ODS AND PVC FREE. THEY CONTAIN NO HEAVY METALS OR FORMALDEHYDE.

BREATHABLE

THE PERMEABILITY OF REVELATIONS FABRICS HELPS REDUCE MILDEW ON AND WITHIN WALLS BY **NOT** ACTING AS A MOISTURE BARRIER.

NOISE REDUCTION

ACOUSTICALLY TRANSPARENT PER ASTM C-423

ANTIMICROBIAL

FABRIC WILL NOT MILDEW, ROT OR SUPPORT THE GROWTH OF BACTERIA AND IS NON-ALLERGENIC.

VAPOR PERMEABILITY

ASTM E-96, PROCEDURE B: 114.6 US PERMS

STATIC

SOLUTION-DYED OLEFIN YARNS HAVE VERY LOW STATIC PROPERTIES.

MAINTENANCE

FABRIC IS EASY TO CLEAN. DEPENDING UPON THE EXTENT OF SOILAGE, USE TRADITIONAL METHODS. IE., WASHING, WIPING, VACUUMING. IF PROMPTLY TREATED, MOST INDELIBLE STAINS CAN BE REMOVED BY USING UNDILUTED CHLORINE BLEACH (CLOROX) OR SELECTED CLEANING AGENTS WITH NO DAMAGING EFFECTS.



P.O. Box 591 • 2101 Kennedy Road • Janesville, WI 53547
Toll-Free 800-542-2371 ext. 214 • Or Telephone 608-756-1241
FAX: 608-758-8253 • E-mail: info@hufcor.com
Web: www.hufcor.com



®DuPont registered trademark
for textile finish.